



DISTINCTIONS AND QUALIFICATIONS

REQUIREMENTS FOR THE LICENTIATE DISTINCTION

GUIDELINES FOR PRINT, DIGITAL AND BOOK FORMATS

Contents

LICENTIATE OF THE ROYAL PHOTOGRAPHIC SOCIETY.....	3
LICENTIATE CRITERIA	5
REQUIREMENTS FOR A PRINT SUBMISSION.....	7
REQUIREMENTS FOR A DIGITAL SUBMISSION.....	8
REQUIREMENTS FOR A BOOK SUBMISSION	9



LICENTIATE OF THE ROYAL PHOTOGRAPHIC SOCIETY

The Distinction 'Licentiate of The Royal Photographic Society' is the first level of the RPS's Distinctions. Licentiate members of The RPS are entitled to use the letters LRPS after their name. The standard is high, but achievable for most dedicated photographers.

On being awarded your Licentiate, you will receive a certificate under the Seal of the RPS, and lapel badge.

Application for Licentiate is open to everyone. However, Distinctions can only be awarded to members of the RPS; non-member applicants must join the RPS in order to receive the Distinction, (there is a non-member section on the application form that must be completed). You are only entitled to use the Distinction as long as you are a member of the RPS.

Your submission can be one of the following:

PRINTS

10 Mounted Prints

DIGITAL

10 Digital Images for
projection in numeric
order

BOOK

A Book containing a
minimum of 10 images
(a minimum of two copies must be
supplied)

Applications cannot be a mix of the above

To be awarded Licentiate of the RPS, you will need to show variety in approach and technique but not necessarily in subject matter, evidence of creative ability and a high technical standard appropriate to your submission, together with a comprehensive knowledge and ability in your discipline.

It is essential that a range of photographic skills are demonstrated within your submission.



LICENTIATE CRITERIA

Applications at Licentiate level will be assessed against the following criteria

CAMERA WORK AND TECHNICAL QUALITY

- 1.** Correct point of focus with appropriate depth of field. You should be able to demonstrate that you know how to control these elements of camera craft through your choice of shutter speed and aperture when appropriate for the subject matter.
- 2.** Suitable sharpness for the subject matter. Camera shake, over enlargement of images or a low-resolution file may result in poor technical quality.
- 3.** Correct exposure with appropriate control of highlight/shadow detail and tonal range.
- 4.** Correct colour rendition/management for the image.
- 5.** An absence of processing faults or digital defects.

VISUAL AWARENESS

You need to show:

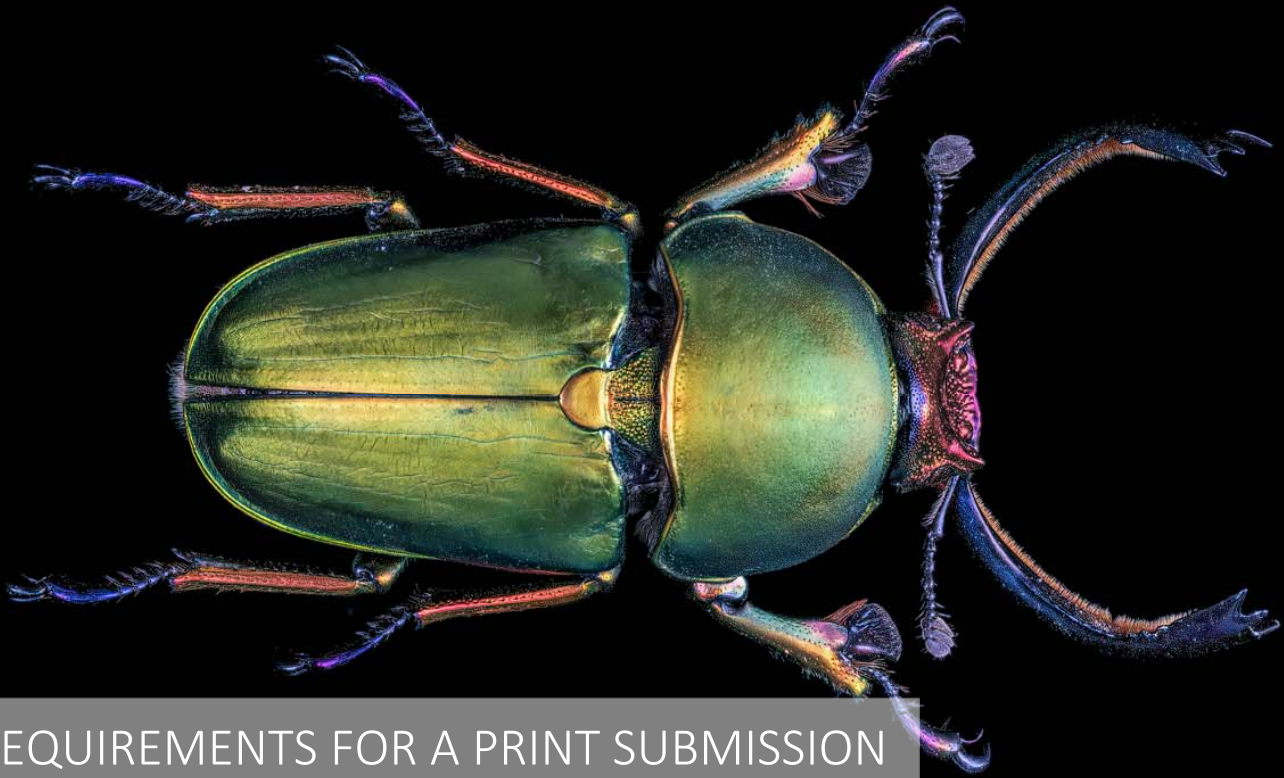
- 1.** A good understanding of how to use light in photography. The correct choice of source and direction, time of day (if natural) and intensity of light can greatly enhance an image. Correct use of light can create a mood or atmosphere and add impact to an image.
- 2.** Composition and design bring all the visual elements together. Effective composition directs the viewers' attention and prompts them to look where the creator intended.
- 3.** Correct choice of viewpoint and an awareness of distracting backgrounds.
- 4.** Appropriate use of colour / monochrome medium.
- 5.** Appropriate use of manipulation or post-production techniques. It is not a requirement to include manipulated images but if you choose to do so it should add value to the image and any post-production work must be technically appropriate.

COMMUNICATION

- 1.** Show clarity of intent with the image and where appropriate a point of interest.
- 2.** Demonstrate evidence of imagination and creativity to convey a mood, message or idea.
- 3.** Show understanding and empathy with the subject matter.
- 4.** The ability to capture the decisive moment when appropriate.

OVERALL IMPRESSION

- 1.** A balanced and cohesive set of images. How the images work together and are presented for assessment is important.
- 2.** An appropriate choice of materials. Selection of an appropriate paper surface and mount board for the image when submitting prints.
- 3.** A variety of approach. It is essential to show a variety of photographic skills and techniques. Repetition of similar images must be avoided.
- 4.** The selection, editing and final presentation of the images on display must show clear evidence that thought has been given to the layout of the submission.



REQUIREMENTS FOR A PRINT SUBMISSION

MANDATORY REQUIREMENTS

- The application must be a portfolio of 10 prints.
- The Applicant must be the creator of all Photographic elements that are being assessed.
- The Applicant must own the copyright of the images and have the permissions from any third party.
- Framed images are not permitted.
- All submissions must be mounted, non-mounted photographs will not be assessed.
- Your submission can be displayed in one, two or three rows.
- Under no circumstances can the applicant's name be displayed on the front of the prints. (Failure to comply with this requirement will result in immediate disqualification and loss of application fee).
- All prints must be numbered on the back of the mounts to correspond to the numbers on the hanging plan.
- Two copies of the presentation layout must be provided on A4 paper (un-mounted) with your full name and date of assessment on the front. Please use a small font e.g. 14 in a legible Font.
- A submission Details Form must be completed and submitted with the prints.

ADVISORY

- More than one image can be displayed in one print or mount but will only count as one of the 10 prints.
- There is a maximum of three display rails.
- The maximum height between the display rails is 23" (585mm).
- The maximum length of the display area is 21ft (6.4m).
- Image sizes are normally between 10"x8" (254mm x 204mm) and 20"x16" (508mm x 408mm).
- When considering the image size, remember the consistency of quality throughout your portfolio is more important than size alone.
- When choosing your mount medium consider that neutral colours are normally the best choice and be consistent throughout the portfolio.
- Print submissions can be mixed medium; colour, monochrome, toned, digital and chemical process can all be included.
- Commercially produced images are acceptable, but the applicant is responsible for the quality of the submitted work.



CREDIT: Thomas Peck LRPS

REQUIREMENTS FOR A DIGITAL SUBMISSION

MANDATORY REQUIREMENTS

- The application must be a portfolio of 10 digital images.
- The Applicant must be the creator of all Photographic elements that are being assessed.
- The Applicant must own the copyright of the images and have the permissions from any third party.
- The image data must be in RGB mode (even for monochrome images) and in the sRGB colour space, NOT CMYK.
- The current display dimensions are either 4096 pixels wide (landscape) or 2400 pixels high (portrait). The image data must not exceed these dimensions in either direction.
- Image files must be saved in standard baseline JPEG format: saving at the highest quality is recommended. Images must be named with two digits only: 01, 02, 03, through to 10.
- The applicant's name must not be included in the file name or displayed with the image. (Failure to comply with this requirement will result in disqualification and loss of the application fee).
- A presentation layout must be provided with your full name and date of assessment on the front. Please use a small font e.g. 14 in a legible Font.
- A submission Details Form must be completed and submitted with the Digital Images.

ADVISORY

- Give consideration to the presentation of your portfolio images, they will be viewed in the numeric order (01 to 10) which you have titled your files. The presentation of the images is part of the assessment criteria. (see page 6. *Overall impression*).
- Ensure that the equipment used to create your portfolio is calibrated correctly.



CREDIT: Jenni Cheesman LRPS

REQUIREMENTS FOR A BOOK SUBMISSION

MANDATORY REQUIREMENTS

- The book must consist of a body of work that contains the minimum of 10 images.
- Two copies of the book must be supplied. A third is desirable.
- The Applicant must be the creator of all Photographic elements that are being assessed.
- The Applicant must own the copyright of the images and have the permissions from any third party. Where there is joint authorship of the Book, the Assessment Panel must decide on whether the Applicant's individual contribution to the submission is appropriate so that the book can be evaluated fairly to the stated Criteria and Requirements.
- Where there is joint authorship in any aspect of the production, the applicant must clearly state who was responsible for which elements.
- When possible the name of the Applicant must not appear on the submission.
- A submission Details Form must be completed and submitted with the books.

ADVISORY

- Give consideration to the presentation and layout of your images, the presentation of the images is part of the assessment criteria.
- The applicant is responsible for the technical quality of the images.
- It is preferable that no name should appear on or in the book. If a name appears, it will not be an anonymous assessment.
- Commercially produced books are acceptable, but the applicant is responsible for the quality of the submitted work.